



## PORSCHE 981 EXHAUST INSTALL

---

**DISCLAIMER:** Please read the instructions before installation very carefully. Ensure all necessary components are available. Top Speed shall hold no liability for any violation against local vehicle regulations or laws. Parts should only be installed by experienced automotive mechanics who have the necessary skill, training and tools to do the job correctly and safely. Incorrect installation can result in personal injury, vehicle damage and/or loss of vehicle control and may potentially damage the product. Any parts modified and/or damaged will void the product from warranty. Replace any loose or worn parts before beginning. Always use appropriate safety devices to support the weight of the vehicle while servicing any components and avoid any uneven road surfaces. Install at your own risk. Detailed Installation procedures vary heavily from vehicle to vehicle. This installation sheet should only be viewed as a general installation instruction. Top Speed is not responsible for damages for any reason in reliance of site information. Apply at your own risk. Professional installation is always highly recommended. Note: All Top Speed Pro 1 products are used for racing cars, vehicles operating on non-normal road conditions and also vehicles for demonstration purposes. Top Speed Pro 1 will hold no liability for the ban of this product due to local regulations or laws. Purchasers shall bear full liability for component installation. Top Speed Pro 1 also will not hold liability for any damage or death caused directly or indirectly from this product nor any installation error, including errors due to inadvertence.

- For Dual Exhaust System: If you tighten the nuts & bolts on the exhaust on one side and move on to the other side, the exhaust on the left and right will not line up evenly and will be off in position. Please tighten the nuts & bolts in rotation. Right → Left → Right → Left and adjust the position of exhaust and exhaust hangers before tightening both side exhaust nuts & bolts. For best results have a helper to stand behind the rear of your car to visually direct you to perfect installation.



**Oem Exhaust**



**Top Speed Pro 1 Exhaust**

**Step 1. Remove both of the rear wheels**



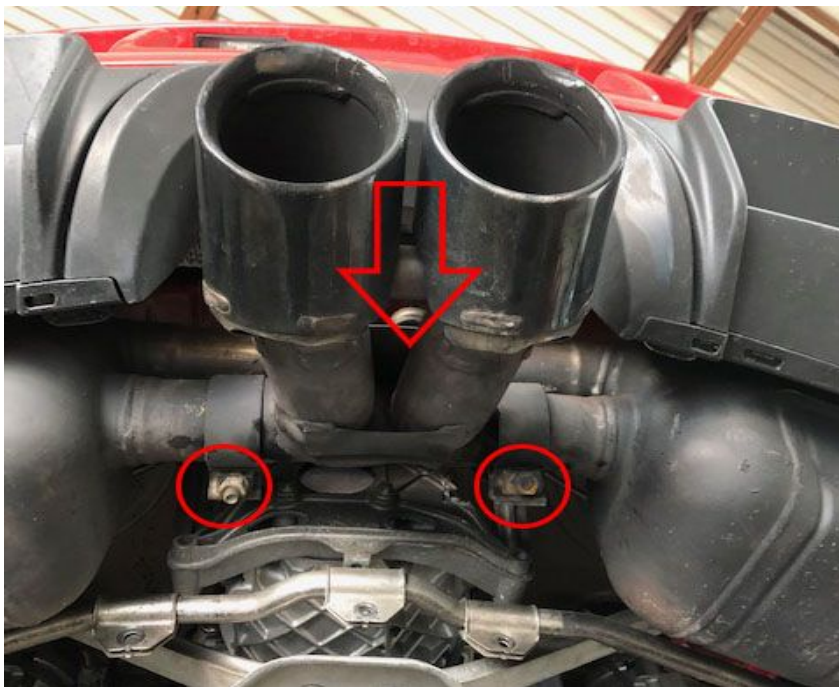
**Step 2. Loosen the bolts connecting the mid pipes to catalytic converters. If needed, spray with penetrating oil to help loosen stubborn bolts.**



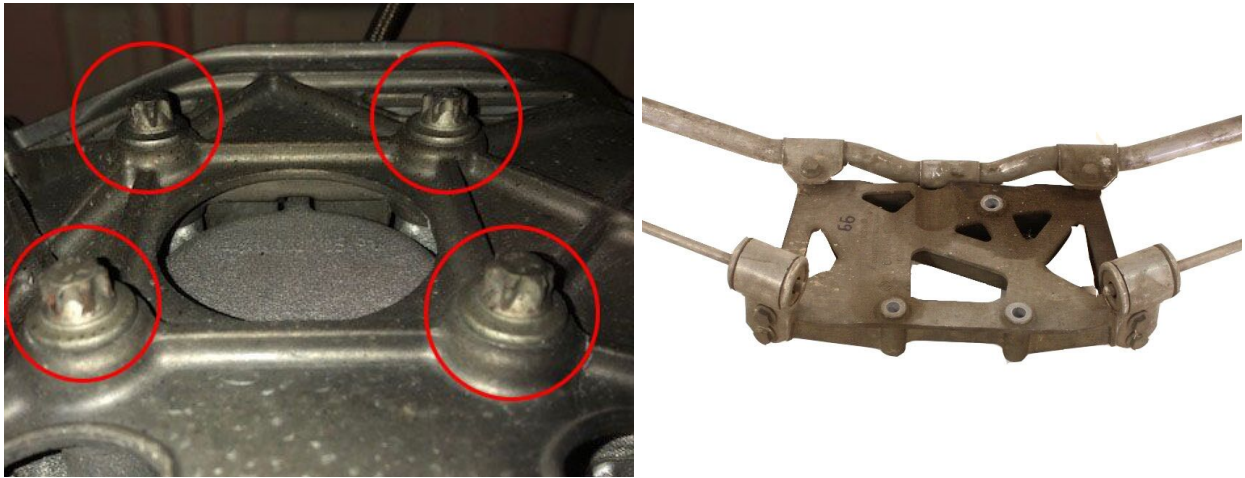
**Step 3. Remove the 3 bolts holding the factory exhaust support bracket to the transmission case**



**Step 4. Loosen exhaust tip**



**Step 5. Move loosened exhaust tip downwards to expose last 4 torx bolts holding attaching support bracket (GT4 ONLY, Cayman Base/S and Boxster Base/S uses 3 standard hex bolts)**



**Step 6. Once all hardware is removed, the factory exhaust system will be ready to be removed. Please be careful and use another person to assist in lowering the factory system from the vehicle**



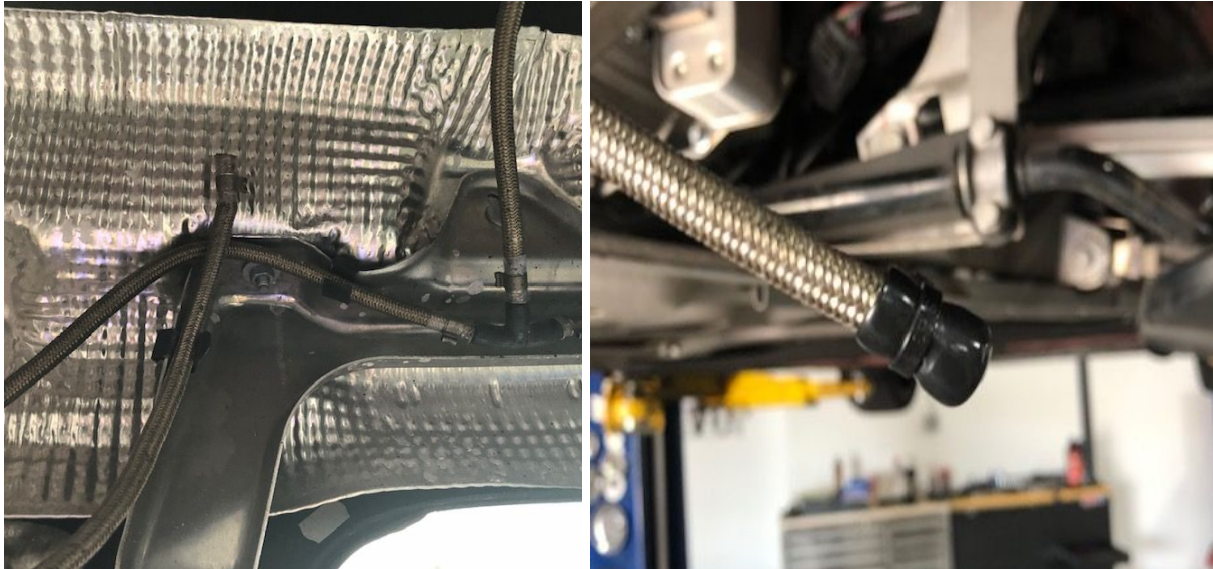
**Step 7. Starting with the mid pipes start to replace the oem in place with your new TOP SPEED PRO 1 PERFORMANCE exhaust system. Make sure to leave bolts slightly tightened until you are ready to set it in its permanent position.**



**Step 8. When replacing the muffler section make sure to have use another person to assist in holding the muffler section while you clamp it down just enough to hold it in place but loose enough to be able to still adjust if needed.**



**Step 9. Cap off vacuum line and reroute back on the original mounting clip so that it doesn't hang down in the way of the new exhaust.**



**Step 10. Start to tighten the mid pipe bolts snug while another person holds the muffler section in the desired position. Next install the tip section and begin to tighten as well once you have it held in its final permanent position.**





Sound clip:

<https://www.youtube.com/watch?v=86UMQyij-IA>